



# explain

**PIONEERING.**  
by Daimler



**Project Management**  
Medienwirtschaft



**Niko**

**Research**  
Medienwirtschaft



**Kim**



**Dennis**

**Design & Development**  
Mobile Medien



**Marcel**



**Taro**



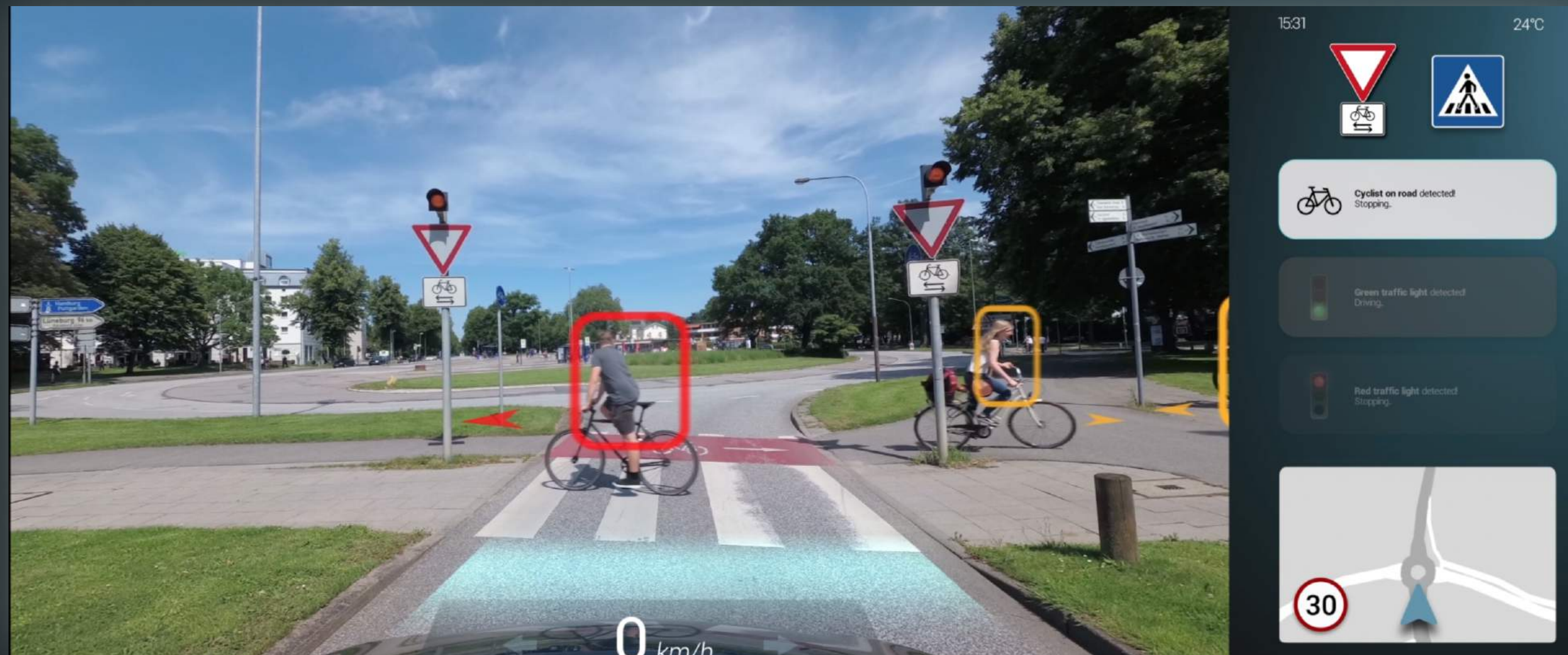
**Erim**

Make **AI decisions** of an **autonomous vehicle** understandable for passengers.

---



- subtle user notifications about last detected events
- AR-Elements to visualize what the car sees
- arrows to visualize the direction of objects or people moving in front of the car
- direction of the car is shown as a subtle line on the ground
- map to give a better overview over the situation and where the car will turn
- detection of recognized and relevant traffic signs
- speed dashboard to give a familiar feeling to the passengers



# Tools

